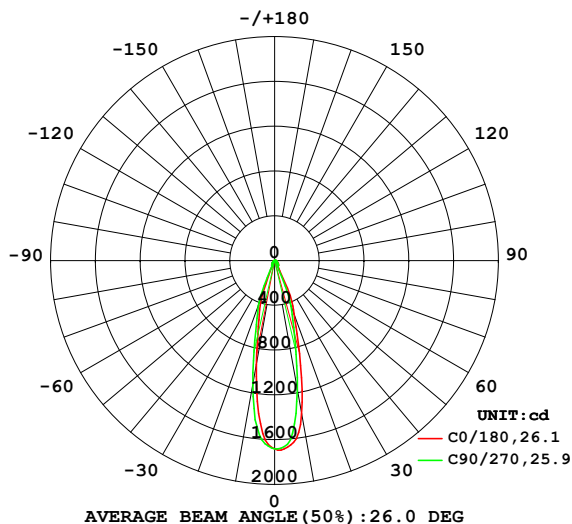


LUMINAIRE PHOTOMETRIC TEST REPORT

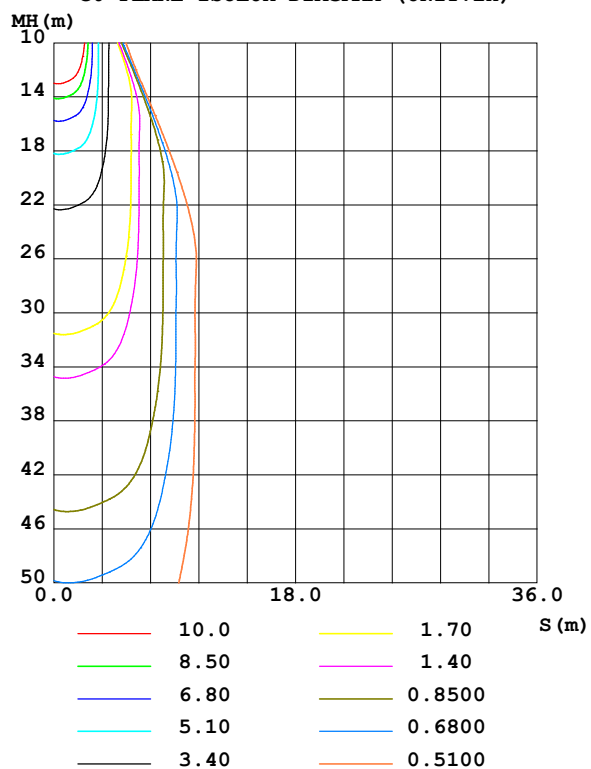
Test:U:220.63V I:0.0385A P:8.2656W PF:0.9725 Freq:49.99Hz UTHDi:0.00% ITHDi:0.00% KDisp:0 Lamp Flux:535.26x1 lm		
NAME: DL3025 3000K RA90 18V	TYPE:	WEIGHT:
SPEC.:	DIM.:	SERIAL No.:
MFR.: VJC Lighting	SUR.: 67*67	Shielding Angle:

DATA OF LAMP		PHOTOMETRIC DATA Eff: 64.76 lm/W			
MODEL	DL3025 3000K RA90 18V	Imax (cd)	1697	S/MH(C0/180)	0.37
NOMINAL POWER(W)	8.3	LOR(%)	100.0	S/MH(C90/270)	0.43
RATED VOLTAGE(V)	220	TOTAL FLUX(lm)	535.26	η UP,DN(C0-180)	0.3,51.0
NOMINAL FLUX(lm)	535.26	CIE CLASS	DIRECT	η UP,DN(C180-360)	0.4,48.3
LAMPS INSIDE	1	η up (%)	0.7	CIBSE SHR NOM	0.50
TEST VOLTAGE(V)	220	η down (%)	99.3	CIBSE SHR MAX	0.55

LUMINOUS INTENSITY DISTRIBUTION DIAGRAM



C0 PLANE ISOLUX DIAGRAM (UNIT:lx)



C Range: 0 - 360DEG
C Interval: 22.5DEG
Test Speed: HIGH
Temperature:25.3℃
Operators:001
Test Date:2023-10-21

γ Range: 0 - 180DEG
 γ Interval: 1.0DEG
Test System:EVERFINE GO-2000B_V1 SYSTEM V2.00.456
Humidity:65.0%
Test Distance:7.580m [K=1.0000]
Remarks:

ZONAL FLUX DIAGRAM

ZONAL FLUX DIAGRAM:

γ	C0	C45	C90	C135	C180	C225	C270	C315	γ	Φ zone	Φ total	%lum, lamp
10	1392	1339	1172	1006	940.8	993.2	1127	1316	0- 10	136.8	136.8	25.5,25.5
20	512.8	507.6	432.0	405.9	312.4	407.6	429.3	502.3	10- 20	197.5	334.2	62.4,62.4
30	55.93	250.8	53.38	72.79	51.82	106.8	55.50	281.2	20- 30	104.7	438.9	82,82
40	41.87	45.57	38.63	39.92	35.16	40.81	38.77	47.79	30- 40	33.85	472.8	88.3,88.3
50	25.37	26.81	22.36	21.41	20.18	21.82	22.94	29.87	40- 50	24.98	497.7	93,93
60	15.32	14.95	13.34	12.41	11.91	12.70	13.79	15.33	50- 60	16.35	514.1	96,96
70	8.680	8.240	7.232	6.478	6.221	6.694	7.583	8.516	60- 70	10.38	524.5	98,98
80	3.462	3.558	2.862	2.263	2.114	2.479	3.159	3.773	70- 80	5.442	529.9	99,99
90	0.1413	0.1677	0.0167	0.0182	0.0317	0.0363	0.0521	0.4349	80- 90	1.404	531.3	99.3,99.3
100	0.0272	0.0363	0.0205	0.0273	0.0566	0.0522	0.0501	0.0388	90-100	0.0431	531.4	99.3,99.3
110	0.0543	0.0590	0.0659	0.0775	0.1042	0.1044	0.0911	0.0799	100-110	0.0577	531.4	99.3,99.3
120	0.1155	0.1248	0.1297	0.1549	0.2041	0.2272	0.1617	0.1689	110-120	0.1128	531.5	99.3,99.3
130	0.1991	0.2495	0.2546	0.3303	0.6463	0.5841	0.5173	0.4269	120-130	0.2298	531.8	99.3,99.3
140	0.5724	0.5917	0.7137	0.7972	1.505	1.408	1.307	1.093	130-140	0.5045	532.3	99.4,99.4
150	1.403	1.395	1.624	1.732	2.515	2.434	2.331	2.124	140-150	0.9041	533.2	99.6,99.6
160	2.328	2.314	2.502	2.528	2.967	2.930	2.931	2.846	150-160	1.081	534.2	99.8,99.8
170	2.557	2.612	2.621	2.640	2.717	2.693	2.728	2.756	160-170	0.7716	535.0	100,100
180	2.537	2.542	2.528	2.517	2.537	2.537	2.530	2.519	170-180	0.2482	535.3	100,100
DEG	LUMINOUS INTENSITY:cd									UNIT:lm		

Conical surface Flux(90deg): 486.54 lm

%lum = 90.9%

%lamp = 90.9%

Conical surface Flux(130deg): 519.95 lm

%lum = 97.1%

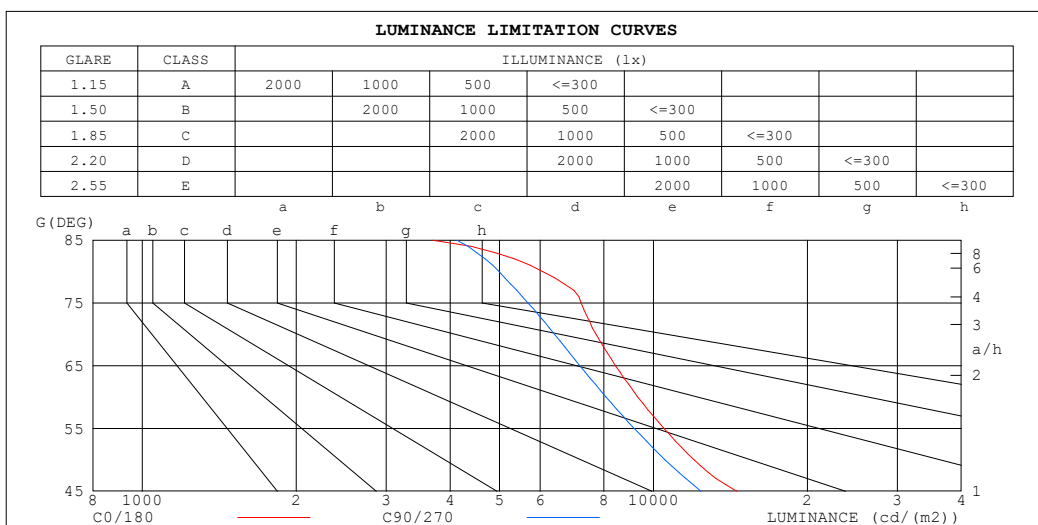
%lamp = 97.1%

C Range: 0 - 360DEG
 C Interval: 22.5DEG
 Test Speed: HIGH
 Temperature:25.3℃
 Operators:001
 Test Date:2023-10-21

γ Range: 0 - 180DEG
 γ Interval: 1.0DEG
 Test System:EVERFINE GO-2000B_V1 SYSTEM V2.00.456
 Humidity:65.0%
 Test Distance:7.580m [K=1.0000]
 Remarks:

LUMINANCE LIMITATION CURVES

Test:U:220.63V I:0.0385A P:8.2656W PF:0.9725 Freq:49.99Hz UTHDi:0.00% ITHDi:0.00% KDisp:0 Lamp Flux:535.26x1 lm		
NAME: DL3025 3000K RA90 18V	TYPE:	WEIGHT:
SPEC.:	DIM.:	SERIAL No.:
MFR.: VJC Lighting	SUR.: 67*67	Shielding Angle:



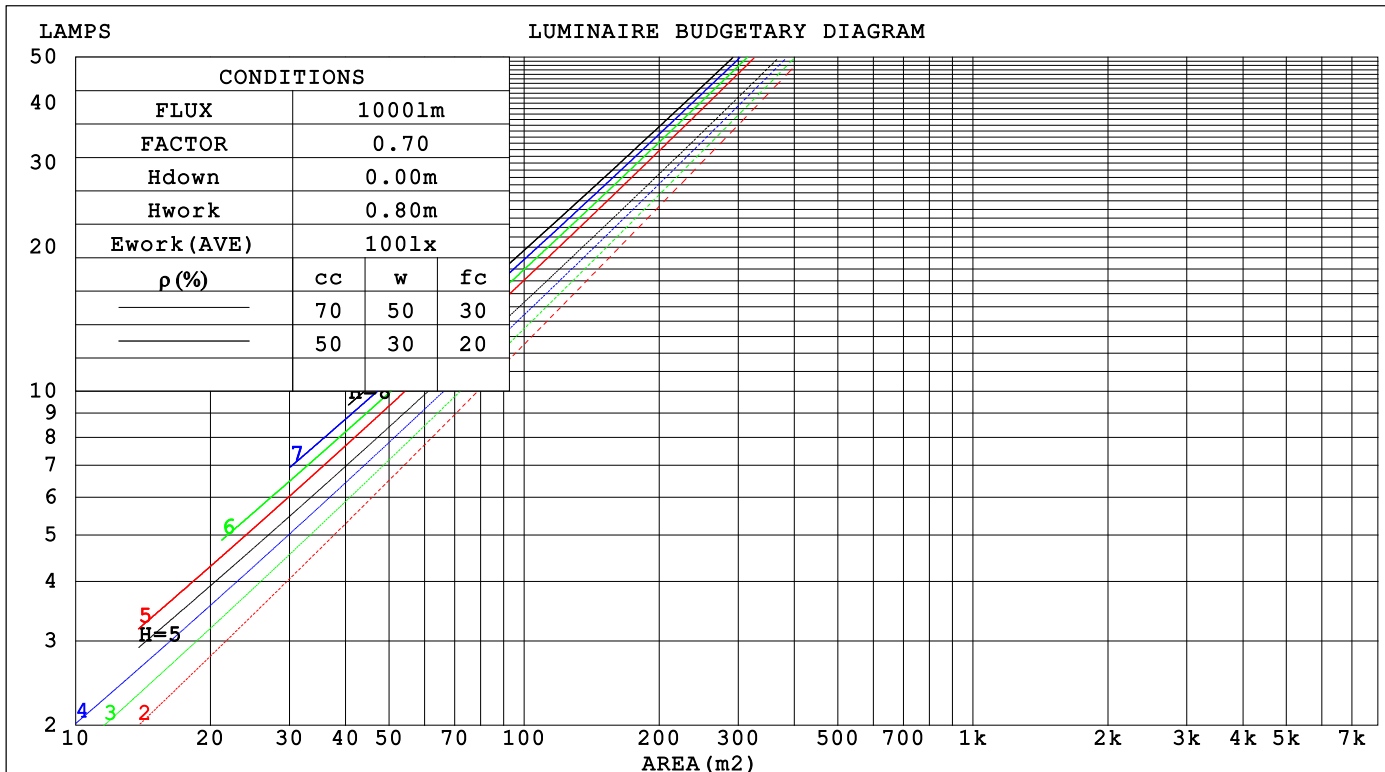
C Range: 0 - 360DEG
C Interval: 22.5DEG
Test Speed: HIGH
Temperature: 25.3°C
Operators: 001
Test Date: 2023-10-21

γ Range: 0 - 180DEG
γ Interval: 1.0DEG
Test System: EVERFINE GO-2000B_V1 SYSTEM V2.00.456
Humidity: 65.0%
Test Distance: 7.580m [K=1.0000]
Remarks:

CU AND LUMINAIRE BUDGETARY ESTIMATE DIAGRAM

Test:U:220.63V I:0.0385A P:8.2656W PF:0.9725 Freq:49.99Hz		
UTHDi:0.00% ITHDi:0.00% KDisp:0 Lamp Flux:535.26x1 lm		
NAME: DL3025 3000K RA90 18V	TYPE:	WEIGHT:
SPEC.:	DIM.:	SERIAL No.:
MFR.: VJC Lighting	SUR.: 67*67	Shielding Angle:

pcc	80%			70%			50%			30%			10%			0
p _w	50%	30%	10%	50%	30%	10%	50%	30%	10%	50%	30%	10%	50%	30%	10%	0
p _{fc}	20%			20%			20%			20%			20%			0
RCR	RCR:Room Cavity Ratio Coefficients of Utilization(CU)															
0.0	1.19	1.19	1.19	1.16	1.16	1.16	1.11	1.11	1.11	1.06	1.06	1.06	1.01	1.01	1.01	.99
1.0	1.11	1.09	1.07	1.09	1.07	1.05	1.05	1.03	1.01	1.01	.99	.98	.97	.96	.95	.93
2.0	1.04	1.00	.97	1.02	.99	.96	.99	.96	.94	.96	.94	.92	.93	.91	.90	.88
3.0	.98	.94	.90	.97	.93	.89	.94	.91	.88	.92	.89	.86	.89	.87	.85	.83
4.0	.93	.88	.84	.92	.87	.84	.90	.86	.83	.88	.84	.82	.86	.83	.81	.79
5.0	.88	.83	.79	.87	.83	.79	.86	.81	.78	.84	.80	.78	.82	.79	.77	.75
6.0	.84	.79	.75	.84	.79	.75	.82	.78	.75	.81	.77	.74	.79	.76	.73	.72
7.0	.81	.76	.72	.80	.75	.72	.79	.74	.71	.78	.74	.71	.76	.73	.70	.69
8.0	.77	.72	.69	.77	.72	.69	.76	.71	.68	.75	.71	.68	.74	.70	.68	.67
9.0	.74	.69	.66	.74	.69	.66	.73	.69	.66	.72	.68	.65	.71	.68	.65	.64
10.0	.72	.67	.64	.71	.67	.64	.71	.66	.63	.70	.66	.63	.69	.66	.63	.62



C Range: 0 - 360DEG
C Interval: 22.5DEG
Test Speed: HIGH
Temperature:25.3℃
Operators:001
Test Date:2023-10-21

γ Range: 0 - 180DEG
γ Interval: 1.0DEG
Test System:EVERFINE GO-2000B_V1 SYSTEM V2.00.456
Humidity:65.0%
Test Distance:7.580m [K=1.0000]
Remarks:

WEC AND CCEC

Test:U:220.63V I:0.0385A P:8.2656W PF:0.9725 Freq:49.99Hz			UTHDi:0.00% ITHDi:0.00% KDisp:0			Lamp Flux:535.26x1 lm		
NAME: DL3025 3000K RA90 18V			TYPE:			WEIGHT:		
SPEC.:			DIM.:			SERIAL No.:		
MFR.: VJC Lighting			SUR.: 67*67			Shielding Angle:		

pcc	80%			70%			50%			30%			10%			0	
pw	50%	30%	10%	50%	30%	10%	50%	30%	10%	50%	30%	10%	50%	30%	10%	0	
pfc	20%			20%			20%			20%			20%			0	
RCR	RCR:Room Cavity Ratio						Wall Exitance Coefficients(WEC)										
0.0																	
1.0	.170	.096	.031	.163	.093	.029	.150	.086	.027	.138	.079	.026	.127	.073	.024		
2.0	.159	.087	.027	.153	.084	.026	.142	.079	.025	.132	.074	.023	.123	.070	.022		
3.0	.149	.079	.024	.144	.077	.023	.134	.073	.022	.126	.069	.021	.118	.065	.020		
4.0	.139	.072	.021	.135	.071	.021	.127	.067	.020	.120	.064	.019	.113	.061	.019		
5.0	.131	.067	.019	.127	.065	.019	.120	.063	.018	.114	.060	.018	.108	.058	.017		
6.0	.123	.062	.018	.120	.061	.017	.114	.059	.017	.109	.056	.017	.103	.054	.016		
7.0	.117	.058	.016	.114	.057	.016	.109	.055	.016	.104	.053	.015	.099	.051	.015		
8.0	.111	.054	.015	.108	.053	.015	.104	.052	.015	.099	.050	.015	.095	.049	.014		
9.0	.105	.051	.014	.103	.050	.014	.099	.049	.014	.095	.048	.014	.091	.046	.013		
10.0	.101	.048	.013	.099	.048	.013	.095	.046	.013	.091	.045	.013	.088	.044	.013		

pcc	80%			70%			50%			30%			10%			0	
pw	50%	30%	10%	50%	30%	10%	50%	30%	10%	50%	30%	10%	50%	30%	10%	0	
pfc	20%			20%			20%			20%			20%			0	
RCR	RCR:Room Cavity Ratio						Ceiling Cavity Exitance Coefficients (CCEC)										
0.0	.196	.196	.196	.168	.168	.168	.114	.114	.114	.066	.066	.066	.021	.021	.021		
1.0	.176	.163	.151	.151	.140	.130	.103	.096	.090	.059	.056	.052	.019	.018	.017		
2.0	.160	.138	.120	.137	.119	.104	.094	.082	.072	.054	.048	.042	.017	.015	.014		
3.0	.147	.119	.097	.126	.103	.084	.086	.071	.059	.050	.042	.035	.016	.014	.011		
4.0	.136	.104	.080	.116	.090	.070	.080	.063	.049	.046	.037	.029	.015	.012	.010		
5.0	.126	.092	.068	.108	.080	.059	.074	.056	.042	.043	.033	.025	.014	.011	.008		
6.0	.117	.083	.058	.101	.072	.050	.070	.050	.036	.040	.030	.021	.013	.010	.007		
7.0	.110	.075	.050	.095	.065	.044	.066	.046	.031	.038	.027	.018	.012	.009	.006		
8.0	.104	.068	.044	.089	.059	.038	.062	.042	.027	.036	.025	.016	.012	.008	.005		
9.0	.098	.063	.039	.085	.055	.034	.059	.038	.024	.034	.023	.014	.011	.007	.005		
10.0	.093	.058	.035	.080	.051	.031	.056	.036	.022	.033	.021	.013	.011	.007	.004		

C Range: 0 - 360DEG
C Interval: 22.5DEG
Test Speed: HIGH
Temperature:25.3℃
Operators:001
Test Date:2023-10-21

γ Range: 0 - 180DEG
γ Interval: 1.0DEG
Test System:EVERFINE GO-2000B_V1 SYSTEM V2.00.456
Humidity:65.0%
Test Distance:7.580m [K=1.0000]
Remarks:

UGR(Unified Glare Rating) Table

Test:U:220.63V I:0.0385A P:8.2656W PF:0.9725 Freq:49.99Hz UTHDi:0.00% ITHDi:0.00% KDisp:0 Lamp Flux:535.26x1 lm											
NAME: DL3025 3000K RA90 18V						TYPE:			WEIGHT:		
SPEC.:						DIM.:			SERIAL No.:		
MFR.: VJC Lighting						SUR.: 67*67			Shielding Angle:		
ceiling/cavity	0.7	0.7	0.5	0.5	0.3	0.7	0.7	0.5	0.5	0.3	
walls	0.5	0.3	0.5	0.3	0.3	0.5	0.3	0.5	0.3	0.3	
working plane	0.2	0.2	0.2	0.2	0.2	0.2	0.2	0.2	0.2	0.2	
Room dimensions		Viewed crosswise					Viewed endwise				
x = 2H y = 2H	2H	18.4	19.3	18.7	19.4	19.6	17.9	18.7	18.1	18.9	19.1
	3H	19.4	20.2	19.7	20.4	20.6	18.8	19.5	19.0	19.7	20.0
	4H	19.8	20.6	20.1	20.8	21.0	19.1	19.8	19.4	20.1	20.3
	6H	20.1	20.8	20.4	21.1	21.3	19.4	20.0	19.7	20.3	20.5
	8H	20.2	20.9	20.5	21.1	21.4	19.4	20.1	19.7	20.3	20.6
	12H	20.2	20.9	20.6	21.1	21.4	19.5	20.1	19.8	20.4	20.7
4H	2H	18.8	19.5	19.1	19.8	20.0	18.4	19.1	18.7	19.3	19.6
	3H	20.0	20.6	20.3	20.9	21.2	19.4	20.1	19.7	20.3	20.6
	4H	20.5	21.1	20.9	21.4	21.7	19.9	20.5	20.2	20.8	21.1
	6H	20.9	21.4	21.3	21.8	22.2	20.2	20.7	20.6	21.1	21.4
	8H	21.0	21.5	21.4	21.9	22.3	20.3	20.8	20.7	21.2	21.5
	12H	21.1	21.5	21.5	21.9	22.3	20.4	20.8	20.8	21.2	21.6
8H	4H	20.7	21.1	21.1	21.5	21.9	20.1	20.5	20.5	20.9	21.3
	6H	21.2	21.6	21.6	22.0	22.4	20.5	20.9	21.0	21.3	21.8
	8H	21.4	21.7	21.8	22.1	22.6	20.7	21.1	21.2	21.5	22.0
	12H	21.4	21.7	21.9	22.2	22.7	20.8	21.1	21.3	21.6	22.1
12H	4H	20.6	21.1	21.1	21.5	21.9	20.1	20.5	20.5	20.9	21.3
	6H	21.2	21.6	21.7	22.0	22.4	20.6	20.9	21.0	21.4	21.8
	8H	21.4	21.7	21.9	22.2	22.6	20.8	21.1	21.3	21.5	22.0
Variations with the observer position at spacings(CIE Pub.117):											
S = 1.0H		+ 0.5 / - 0.5					+ 0.6 / - 0.6				
1.5H		+ 0.3 / - 0.4					+ 0.2 / - 0.5				
2.0H		+ 0.9 / - 0.6					+ 0.6 / - 0.7				

CIE Pub.117, 535.3 lm Total Lamp Luminous Flux Correct (8log(F/F0) = -2.2)
Area: 0.0033 m2

C Range: 0 - 360DEG
C Interval: 22.5DEG
Test Speed: HIGH
Temperature:25.3℃
Operators:001
Test Date:2023-10-21

γ Range: 0 - 180DEG
γ Interval: 1.0DEG
Test System:EVERFINE GO-2000B_V1 SYSTEM V2.00.456
Humidity:65.0%
Test Distance:7.580m [K=1.0000]
Remarks:

UTILIZATION FACTORS TABLE

Test:U:220.63V I:0.0385A P:8.2656W PF:0.9725 Freq:49.99Hz		
UTHDi:0.00% ITHDi:0.00% KDisp:0 Lamp Flux:535.26x1 lm		
NAME: DL3025 3000K RA90 18V	TYPE:	WEIGHT:
SPEC.:	DIM.:	SERIAL No.:
MFR.: VJC Lighting	SUR.: 67*67	Shielding Angle:

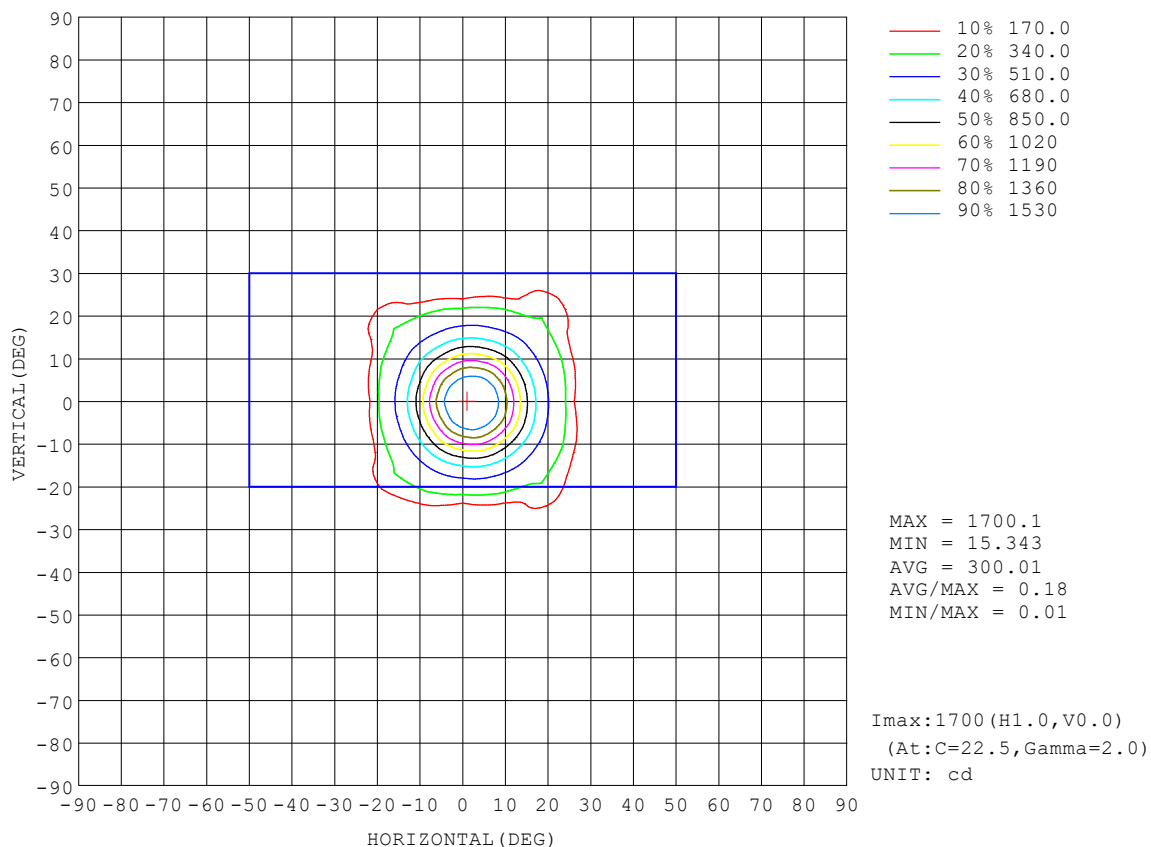
REFLECTANCE										
Ceiling	0.8	0.8	0.8	0.7	0.7	0.7	0.5	0.5	0.5	0
Walls	0.7	0.5	0.3	0.7	0.5	0.3	0.7	0.5	0.3	0
Working plane	0.2	0.2	0.2	0.2	0.2	0.2	0.2	0.2	0.2	0
ROOM INDEX	UTILIZATION FACTORS (PERCENT) $k(RI) \times RCR = 5$									
$k = 0.60$	84	77	73	84	77	73	83	77	73	69
0.80	92	86	81	91	85	81	90	85	81	77
1.00	97	91	87	96	90	86	94	90	86	81
1.25	101	95	91	100	95	91	98	93	90	86
1.50	104	99	95	103	98	94	100	96	93	88
2.00	107	102	99	105	101	98	103	99	96	91
2.50	109	105	101	107	103	100	104	101	98	92
3.00	111	107	104	109	105	103	105	103	100	94
4.00	113	110	107	111	108	106	107	105	103	96
5.00	114	112	110	112	110	108	108	106	105	97
ROOM INDEX	UF (total)									Direct
According to DIN EN 13032-2 2004			Suspended					SHRNOM = 1.25		

C Range: 0 - 360DEG
C Interval: 22.5DEG
Test Speed: HIGH
Temperature:25.3℃
Operators:001
Test Date:2023-10-21

γ Range: 0 - 180DEG
γ Interval: 1.0DEG
Test System:EVERFINE GO-2000B_V1 SYSTEM V2.00.456
Humidity:65.0%
Test Distance:7.580m [K=1.0000]
Remarks:

ISOCANDELA DIAGRAM

Test:U:220.63V I:0.0385A P:8.2656W PF:0.9725 Freq:49.99Hz UTHDi:0.00% ITHDi:0.00% KDisp:0 Lamp Flux:535.26x1 lm		
NAME: DL3025 3000K RA90 18V	TYPE:	WEIGHT:
SPEC.:	DIM.:	SERIAL No.:
MFR.: VJC Lighting	SUR.: 67*67	Shielding Angle:

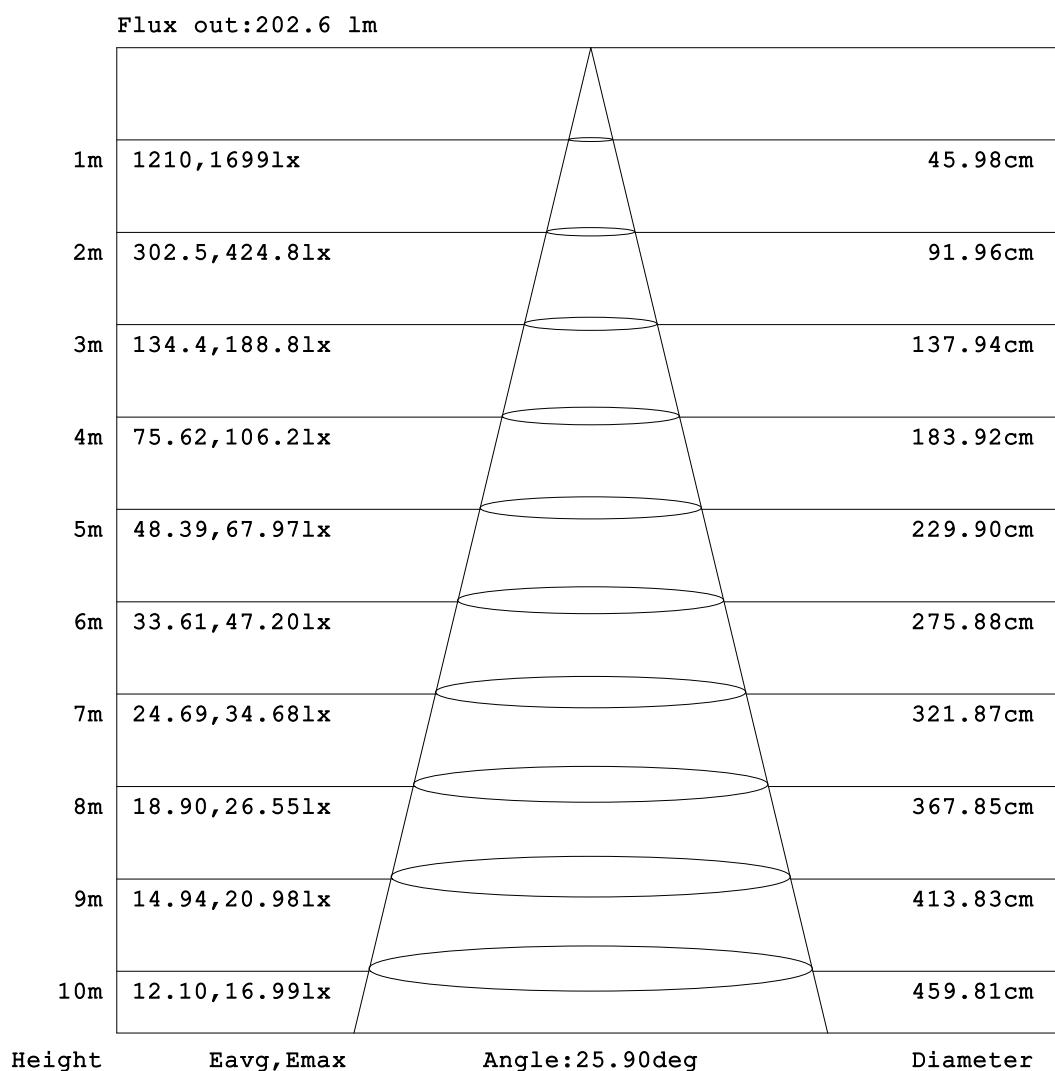


C Range: 0 - 360DEG
C Interval: 22.5DEG
Test Speed: HIGH
Temperature:25.3℃
Operators:001
Test Date:2023-10-21

γ Range: 0 - 180DEG
γ Interval: 1.0DEG
Test System:EVERFINE GO-2000B_V1 SYSTEM V2.00.456
Humidity:65.0%
Test Distance:7.580m [K=1.0000]
Remarks:

AAI Figure

Test:U:220.63V I:0.0385A P:8.2656W PF:0.9725 Freq:49.99Hz UTHDi:0.00% ITHDi:0.00% KDisp:0 Lamp Flux:535.26x1 lm		
NAME: DL3025 3000K RA90 18V	TYPE:	WEIGHT:
SPEC.:	DIM.:	SERIAL No.:
MFR.: VJC Lighting	SUR.: 67*67	Shielding Angle:



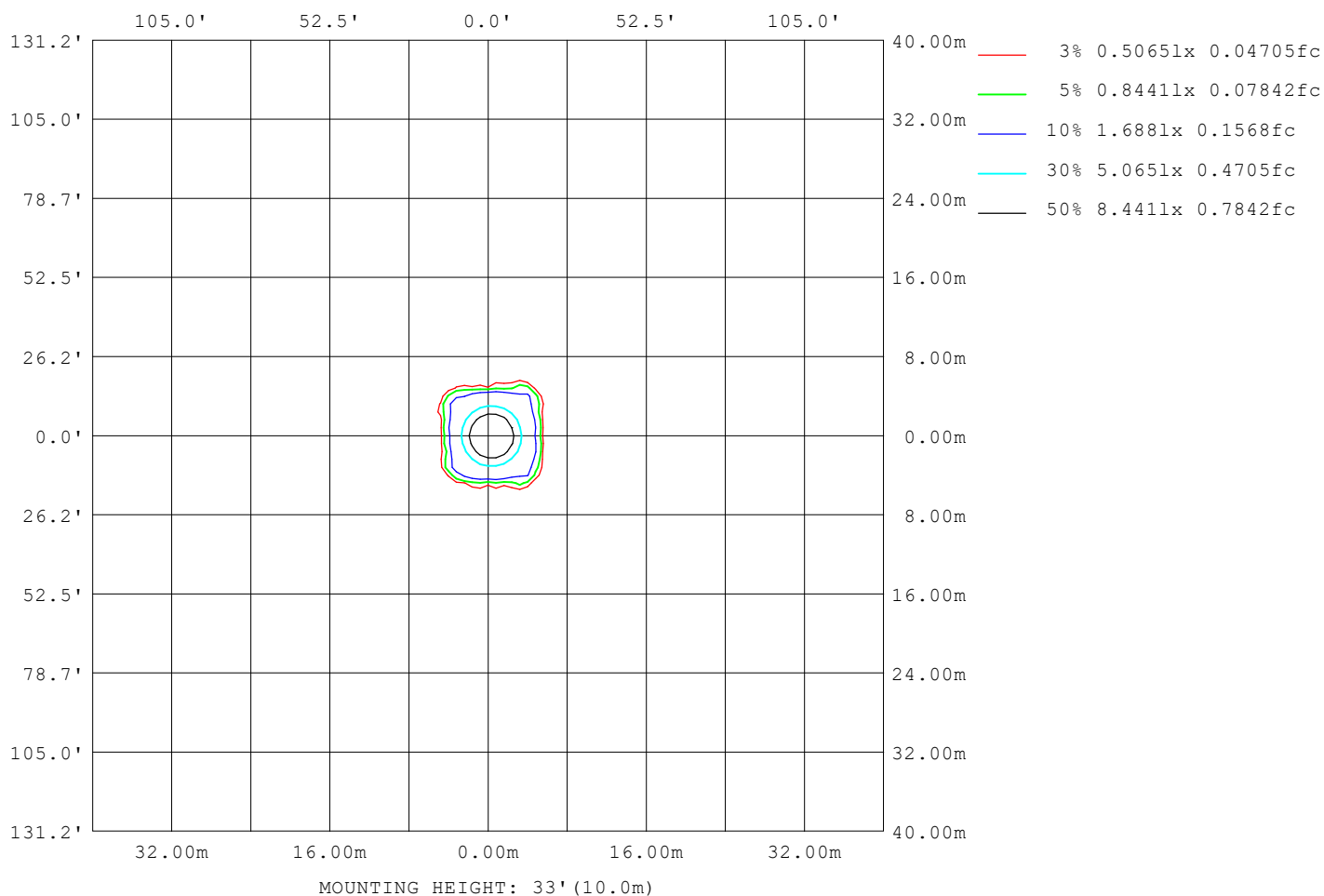
Note:The Curves indicate the illuminated area and the average illumination when the luminaire is at different distance.

C Range: 0 - 360DEG
C Interval: 22.5DEG
Test Speed: HIGH
Temperature:25.3℃
Operators:001
Test Date:2023-10-21

γ Range: 0 - 180DEG
γ Interval: 1.0DEG
Test System:EVERFINE GO-2000B_V1 SYSTEM V2.00.456
Humidity:65.0%
Test Distance:7.580m [K=1.0000]
Remarks:

ISOLUX DIAGRAM

Test:U:220.63V I:0.0385A P:8.2656W PF:0.9725 Freq:49.99Hz UTHDi:0.00% ITHDi:0.00% KDisp:0 Lamp Flux:535.26x1 lm		
NAME: DL3025 3000K RA90 18V	TYPE:	WEIGHT:
SPEC.:	DIM.:	SERIAL No.:
MFR.: VJC Lighting	SUR.: 67*67	Shielding Angle:



C Range: 0 - 360DEG
C Interval: 22.5DEG
Test Speed: HIGH
Temperature: 25.3°C
Operators: 001
Test Date: 2023-10-21

γ Range: 0 - 180DEG
γ Interval: 1.0DEG
Test System: EVERFINE GO-2000B_V1 SYSTEM V2.00.456
Humidity: 65.0%
Test Distance: 7.580m [K=1.0000]
Remarks:

LED Avg.L Report

Test:U:220.63V I:0.0385A P:8.2656W PF:0.9725 Freq:49.99Hz UTHDi:0.00% ITHDi:0.00% KDisp:0 Lamp Flux:535.26x1 lm		
NAME: DL3025 3000K RA90 18V	TYPE:	WEIGHT:
SPEC.:	DIM.:	SERIAL No.:
MFR.: VJC Lighting	SUR.: 67*67	Shielding Angle:

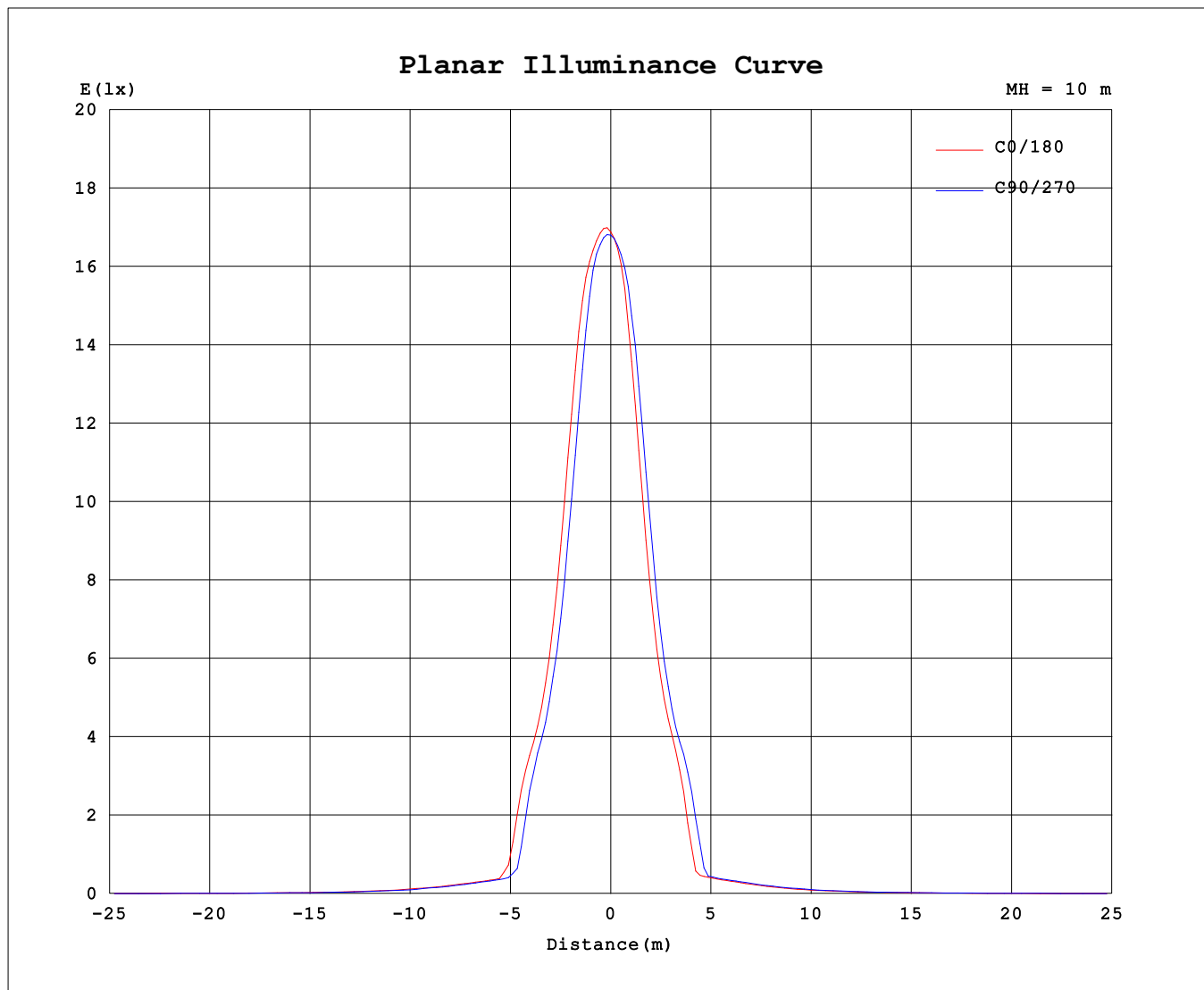
AvgL	cd/m2
L_0~180 (65) av	7356
L_0~180 (75) av	5960
L_0~180 (85) av	2492
L_90~270 (65) av	7321
L_90~270 (75) av	5886
L_90~270 (85) av	4569
L_45 (65) av	7429
L_45 (75) av	5923
L_45 (85) av	4173

Standard: GB/T 29293-2012

C Range: 0 - 360DEG
C Interval: 22.5DEG
Test Speed: HIGH
Temperature:25.3℃
Operators:001
Test Date:2023-10-21

γ Range: 0 - 180DEG
γ Interval: 1.0DEG
Test System:EVERFINE GO-2000B_V1 SYSTEM V2.00.456
Humidity:65.0%
Test Distance:7.580m [K=1.0000]
Remarks:

Planar Illuminance Curve



C Range: 0 - 360DEG
C Interval: 22.5DEG
Test Speed: HIGH
Temperature: 25.3 °C
Operators: 001
Test Date: 2023-10-21

γ Range: 0 - 180DEG
γ Interval: 1.0DEG
Test System: EVERFINE GO-2000B_V1 SYSTEM V2.00.456
Humidity: 65.0%
Test Distance: 7.580m [K=1.0000]
Remarks:

LUMINOUS DISTRIBUTION INTENSITY DATA

Test:U:220.63V I:0.0385A P:8.2656W PF:0.9725 Freq:49.99Hz UTHDi:0.00% ITHDi:0.00% KDisp:0 Lamp Flux:535.26x1 lm																	
NAME: DL3025 3000K RA90 18V									TYPE:						WEIGHT:		
SPEC.:									DIM.:						SERIAL No.:		
MFR.: VJC Lighting									SUR.: 67*67						Shielding Angle:		

Table--1

UNIT: cd

C (DEG) γ (DEG)	0	22.5	45	67.5	90	112.5	135	157.5	180	202.5	225	247.5	270	292.5	315	337.5			
0	1681	1681	1681	1681	1681	1681	1681	1681	1681	1681	1681	1681	1681	1681	1681	1681			
5	1653	1663	1656	1644	1610	1571	1510	1471	1462	1464	1486	1523	1568	1600	1633	1647			
10	1392	1403	1339	1278	1172	1102	1006	957	941	938	993	1037	1127	1202	1316	1373			
15	863	878	825	766	687	651	598	557	548	558	600	620	658	711	804	847			
20	513	524	508	466	432	423	406	353	312	368	408	411	429	456	502	510			
25	272	364	365	211	86.3	229	289	58.8	59.1	89.7	314	166	88.3	244	371	345			
30	55.9	66.6	251	56.2	53.4	52.7	72.8	53.2	51.8	55.3	107	55.8	55.5	57.2	281	68.3			
35	50.1	50.7	50.2	49.2	47.0	49.1	49.9	47.3	43.6	46.6	49.3	49.0	48.3	50.8	54.4	50.9			
40	41.9	45.2	45.6	42.9	38.6	40.6	39.9	38.4	35.2	38.5	40.8	41.1	38.8	44.3	47.8	45.1			
45	33.8	38.4	38.0	33.3	28.9	29.8	31.7	27.0	26.0	27.5	31.6	29.7	29.6	35.9	39.3	38.7			
50	25.4	26.6	26.8	24.3	22.4	22.5	21.4	20.9	20.2	21.2	21.8	22.6	22.9	25.0	29.9	26.4			
55	19.8	20.4	19.6	18.8	17.4	17.3	16.4	16.2	15.6	16.3	16.7	17.5	17.9	19.3	20.0	20.4			
60	15.3	15.7	15.0	14.5	13.3	13.2	12.4	12.3	11.9	12.4	12.7	13.4	13.8	14.8	15.3	15.7			
65	11.7	11.9	11.3	10.9	10.0	9.78	9.17	9.08	8.82	9.16	9.42	10.0	10.4	11.2	11.6	11.9			
70	8.68	8.77	8.24	7.91	7.23	6.97	6.48	6.40	6.22	6.48	6.69	7.21	7.58	8.21	8.52	8.82			
75	6.14	6.16	5.70	5.44	4.85	4.62	4.19	4.16	4.04	4.19	4.41	4.82	5.20	5.69	5.93	6.20			
80	3.46	3.64	3.56	3.32	2.86	2.63	2.26	2.19	2.11	2.23	2.48	2.81	3.16	3.53	3.77	3.93			
85	1.06	1.37	1.48	1.54	1.19	0.94	0.58	0.41	0.37	0.50	0.80	1.12	1.44	1.72	1.94	1.90			
90	0.14	0.14	0.17	0.08	0.02	0.01	0.02	0.02	0.03	0.04	0.04	0.04	0.05	0.25	0.43	0.49			
95	0.03	0.04	0.04	0.03	0.02	0.03	0.02	0.03	0.04	0.03	0.04	0.03	0.05	0.03	0.03	0.02			
100	0.03	0.05	0.04	0.04	0.02	0.04	0.03	0.05	0.06	0.03	0.05	0.03	0.05	0.03	0.04	0.02			
105	0.04	0.06	0.04	0.06	0.04	0.07	0.05	0.08	0.07	0.05	0.07	0.05	0.07	0.04	0.06	0.03			
110	0.05	0.07	0.06	0.08	0.07	0.09	0.08	0.10	0.10	0.07	0.10	0.08	0.09	0.06	0.08	0.05			
115	0.09	0.11	0.09	0.12	0.10	0.13	0.11	0.13	0.13	0.12	0.15	0.11	0.12	0.10	0.11	0.08			
120	0.12	0.14	0.12	0.15	0.13	0.16	0.15	0.17	0.20	0.20	0.23	0.18	0.16	0.14	0.17	0.12			
125	0.14	0.18	0.17	0.19	0.16	0.22	0.22	0.23	0.38	0.35	0.36	0.31	0.29	0.26	0.27	0.22			
130	0.20	0.26	0.25	0.27	0.25	0.33	0.33	0.35	0.65	0.60	0.58	0.54	0.52	0.44	0.43	0.38			
135	0.34	0.38	0.38	0.42	0.43	0.49	0.51	0.55	1.02	0.98	0.93	0.88	0.85	0.74	0.69	0.65			
140	0.57	0.58	0.59	0.66	0.71	0.76	0.80	0.87	1.51	1.47	1.41	1.36	1.31	1.18	1.09	1.04			
145	0.92	0.91	0.93	1.03	1.12	1.18	1.23	1.33	2.03	2.01	1.94	1.90	1.82	1.71	1.60	1.56			
150	1.40	1.38	1.39	1.52	1.62	1.69	1.73	1.84	2.52	2.47	2.43	2.40	2.33	2.22	2.12	2.09			
155	1.90	1.89	1.89	2.01	2.12	2.19	2.21	2.29	2.84	2.78	2.79	2.76	2.72	2.62	2.57	2.53			
160	2.33	2.32	2.31	2.41	2.50	2.55	2.53	2.61	2.97	2.92	2.93	2.93	2.93	2.84	2.85	2.80			
165	2.54	2.57	2.55	2.60	2.62	2.65	2.65	2.65	2.89	2.90	2.87	2.92	2.90	2.89	2.87	2.88			
170	2.56	2.60	2.61	2.58	2.62	2.63	2.64	2.59	2.72	2.72	2.69	2.73	2.73	2.73	2.76	2.82			
175	2.56	2.55	2.57	2.53	2.55	2.51	2.53	2.52	2.55	2.58	2.55	2.57	2.55	2.59	2.59	2.64			
180	2.54	2.54	2.54	2.53	2.53	2.52	2.52	2.52	2.54	2.54	2.54	2.53	2.53	2.52	2.52	2.53			

C Range: 0 - 360DEG

C Interval: 22.5DEG

Test Speed: HIGH

Temperature:25.3℃

Operators:001

Test Date:2023-10-21

γ Range: 0 - 180DEG

γ Interval: 1.0DEG

Test System:EVERFINE GO-2000B_V1 SYSTEM V2.00.456

Humidity:65.0%

Test Distance:7.580m [K=1.0000]

Remarks: